

## EXCLUSIVE NEW PRODUCTS AVAILABLE

**NOW AT YOUR LOCAL HOBBY SHOP**

### DISTRIBUTION TO MORE THAN 60 COUNTRIES

You can be one of the first holding these selected products in your hands!

Ask your local hobby shop for LRP products or contact your national distributor:

Scan or click...

List of distributors on [www.lrp.cc](http://www.lrp.cc)



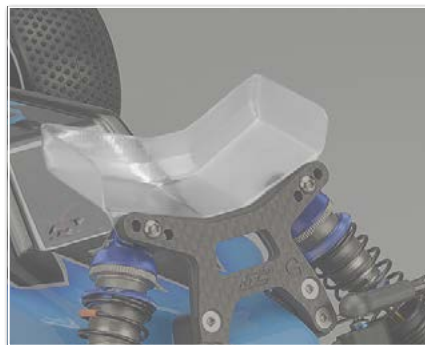
Sanwa RX-481WP receiver (waterproof)



Sanwa HVS-702 low-profile servo



JConcepts B6 / B6D body with aero wing



JConcepts Aero B6 / B6D front wing (2pc)



JConcepts Pin Downs - pink, medium soft



JConcepts Swaggers - pink, medium soft

**MORE DETAILS  
ON THE  
FOLLOWING  
PAGES...**



## SANWA RX-481WP 2.4GHZ/4-CHANNEL/WATERPROOF



**WATERPROOF!  
INTEGRATED ANTENNA!**

### FEATURES

- Weight. 10.7g
- Dimensions: 21.4 x 27.6 x 29.4mm
- 4-channels
- SSL compatible
- FH4/FH3 modes

Scan or click...

More information on  
the product page at:  
[www.LRP.cc](http://www.LRP.cc)



**SANWA**  
THE 2.4GHz SPECIALISTS

#### THE RX-481 IS NOW WATERPROOF!

The antenna of the Sanwa RX-481 receiver is already integrated into the housing. So, there's no more antenna cable that has to be fixed on the chassis. Therefore, the antenna cable can't be broken or disconnected anymore when it comes to a crash. Additionally the RX-481WP receiver is now waterproof (IPX4).

The integration of the antenna into the housing doesn't have any negative influence on the range and interference-free transmission as many successful races have shown. The Sanwa RX-481 receiver has 4 channels and can be operated in FH-3 or FH-4 mode.

#### COMPATIBLE TRANSMITTERS:

M12S, M12, EXZES ZZ, EXZES Z, M11X, EXZES X, MT-4S, MT-4, MT-S, MX-3X, GEMINI X



© 2016 LRP electronic GmbH

Order No.	Item	EAN Code	RRP*
107A41313A	Sanwa RX-481WP Receiver (2.4GHz FH3, FH4/SSR/4-Channel/waterproof)	4944683032087	None

\* Net price without VAT in \$

## SANWA HVS-702 LOW-PROFILE 8.6KGCM/0.07S/40°/7.4V



**7.4VOLT SERVO!  
LOW PROFILE!**

### FEATURES

- Low-profiled digital servo
- High response mode compatible
- LiPo 2 cell compatible
- High speed type
- Double ball bearing and metal gear

Scan or click...

More information on  
the product page at:  
[www.LRP.cc](http://www.LRP.cc)



**SANWA**  
THE 2.4GHz SPECIALISTS

#### THE LIPO CAPABLE LOW PROFILE SERVO FROM SANWA!

The Sanwa HVS-702 is the perfect servo for all 1/10 competition models. As a low profile servo, it is extremely light weight and offers a torque of 8.6kgcm. Therefore it is perfectly suited as steering servo for touring cars and buggies. It can be directly connected to a 7.4 Volt battery (2S LiPo) and is therefore also perfect for cars with Nitro engine and 2S LiPo battery.

#### TECHNICAL DATA:

Type .....Digital  
Weight ..... 44g  
Dimensions ..... 40.5x21.0x26.5mm  
Speed ..... 0.07s/40°  
Torque ..... 8.6kgcm  
Metal gear ..... Yes



© 2016 LRP electronic GmbH

Order No.	Item	EAN Code	RRP*
107A54401A	Sanwa HVS-702 Low-Profile Servo (8.6kgcm, 0.07s/40° @ 7.4V)	4944683031752	None

\* Net price without VAT in \$



## PIN DOWNS & SWAGGERS 1/10 BUGGY TIRES



**PIN DOWNS**

**SWAGGERS**

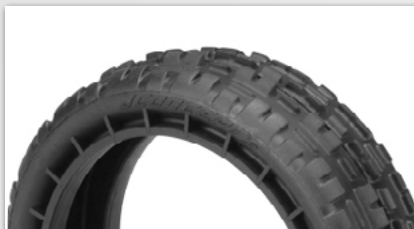


### FEATURES

- New profile design
- Especially developed for carpet and astroturf
- High-quality inserts included (only Pin Downs)

Scan or click...

More information on the product page at: [www.LRP.cc](http://www.LRP.cc)



#### PIN DOWNS

JConcepts re-invents the pin style tire with the release of the Pin Downs. The rear tires include gray, open cell inserts making them a complete set ready to mount, straight out of the package. The Pin Downs work best on Carpet and Astroturf tracks where typically a small pin tire is working.

#### Features:

- JConcepts fit, finish and design
- Multi-position, directional sharp pins
- Hefty pin to carcass radius for increased response
- Textured tire carcass indicates direction
- Carefully shaped profiled carcass for rolling speed
- Includes gray, open cell inserts

#### SWAGGERS

The Swagger has shown to produce ultra fast lap times while also being easier to drive than other options on the market. The front tires are designed for the narrow "slim" style front wheels which are already available from JConcepts with part numbers 3376W or 3376Y.

#### Features:

- JConcepts fit, finish and design
- Offset, multiple height, angular ribs
- Low-profile carcass for increased Response
- Carefully shaped carcass for rolling speed

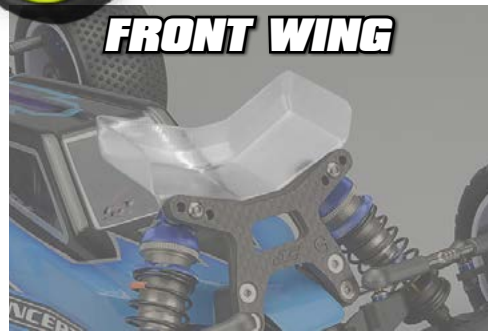
Order No.	Item	EAN Code	RRP*
J3136-010	JConcepts Pin Downs - pink compound, medium soft - (fits 2.2" buggy rear wheel)	845937014276	None
J3137-010	JConcept Swaggers - pink compound, medium soft - (fits 2.2" 2wd front wheel)	845937014283	None

\* Net price without VAT in \$

## S2-B6D BODYSHELL & FRONT WING



**BODYSHELL**



**FRONT WING**

### FEATURES

- JConcepts original Silencer 2 styling
- Aggressive, progressive cab design
- Channeled roof with center stabilizer
- Useable side-pod vents

Scan or click...

More information on  
the product page at:  
[www.LRP.cc](http://www.LRP.cc)



#### BODYSHELL

What is the response when a popular new vehicle hits the market? It's simple; add the most popular and best performing body to date to an already successful platform. Dubbed the S2, the new shell rocks some familiar features but rolled together with a low-profile stance. With 2015 IFMAR Championship credibility backing this design, it's an easy choice. The S2 is a performer straight out of the package, with the Aero rear wing to help deliver results on any racing circuit.

#### Features:

- JConcepts original Silencer 2 styling
- Aggressive, progressive cab design
- Channeled roof with center stabilizer
- Useable side-pod vents
- Compatible with stand-up 3 and 4 gear and lay-down transmission
- Includes two Aero rear wings
- Includes JConcepts decal sheet and window mask

#### FRONT WING

Aerodynamics is a key point on any vehicle and in particular, 1/10th off-road vehicles. A drivers aero package consists of the vehicle type, body style and finally the finishing touch, the front wing. JConcepts regularly experiments with aero features throughout the entire product line, primarily bodies and wings. Front wings are not a new concept, however, they are new to the latest generation of mid-motor vehicles and demanding high-speed and grippy circuits.

#### Features:

- Original JConcepts design
- High-attack, V-angle Aero design
- Radical, edgy design which compliments, Finisher and Silencer body designs
- Light-weight and durable design
- Trim lines and dimpled location for B6 series vehicles

Order No.	Item	EAN Code	RRP*
J0314I	JConcepts S2 - B6 / B6D body w/ Aero wing - Light-weight (Fits - B6 / B6D)	845937015778	None
J0160	JConcepts - Aero B6 / B6D front wing, Fits gullwing front arm - narrow, 2pc (Fits - B6 / B6D)	845937015730	None